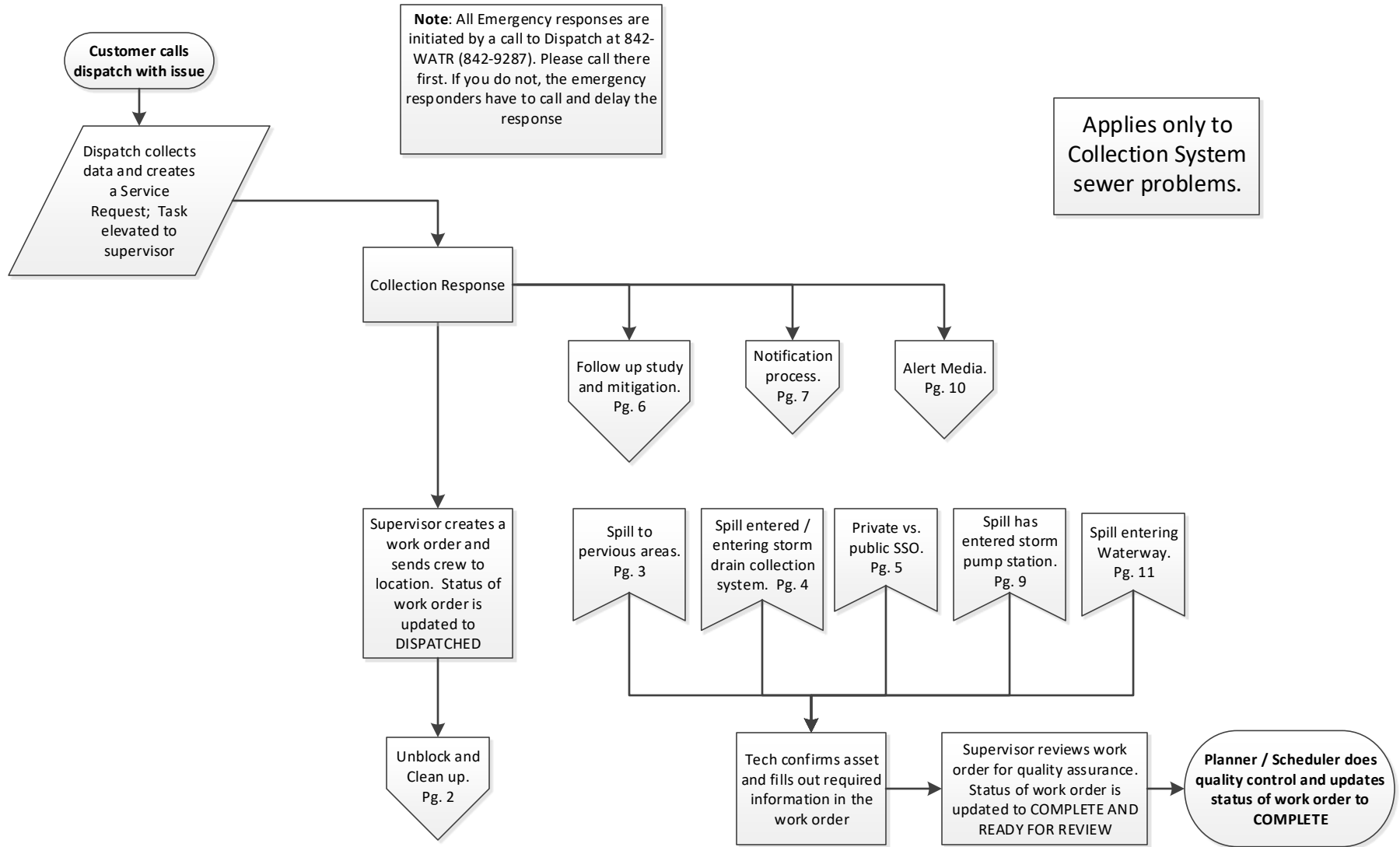


Overflow Emergency Response Plan

12-1-2019

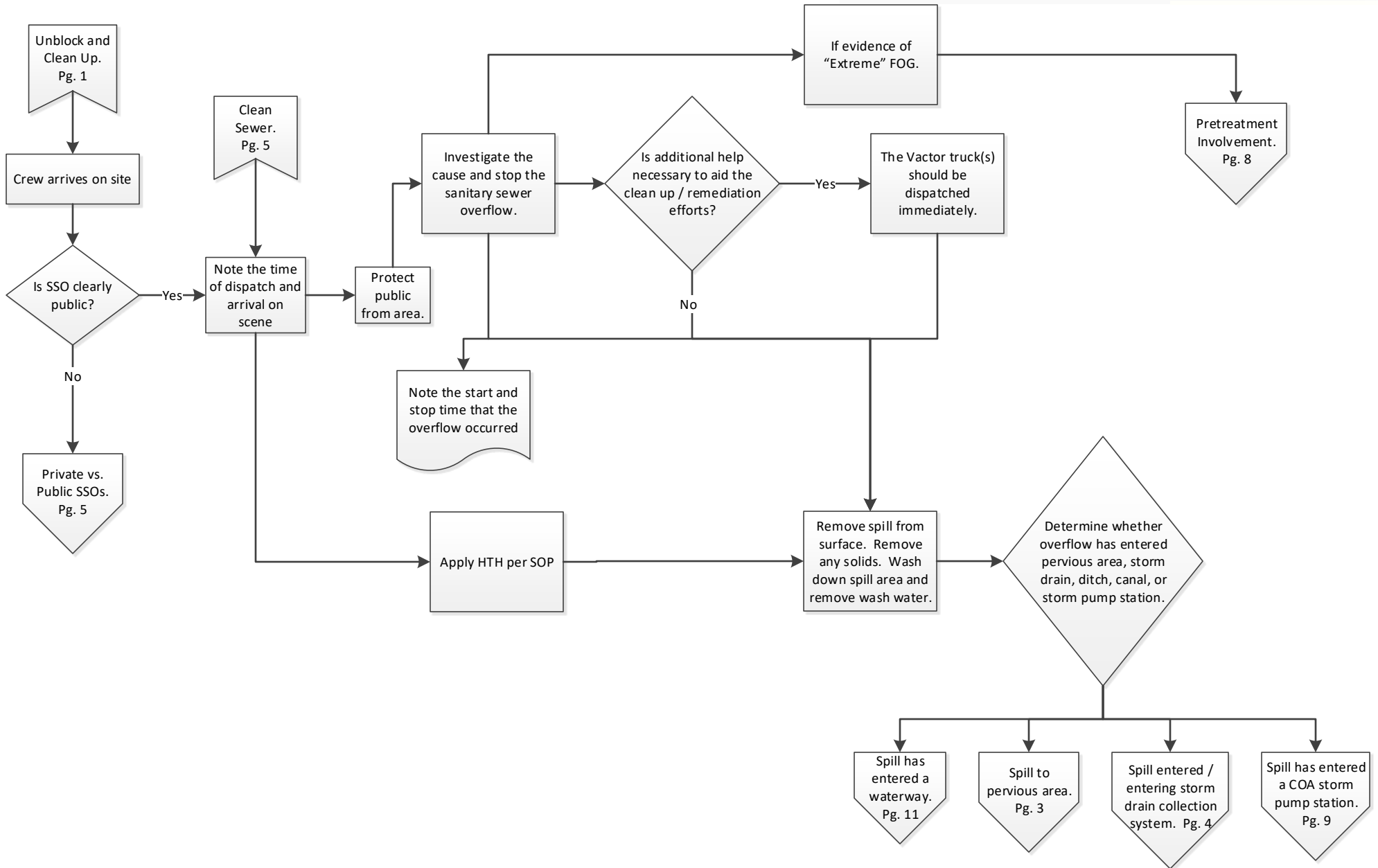
Albuquerque Bernalillo County Water Utility Authority

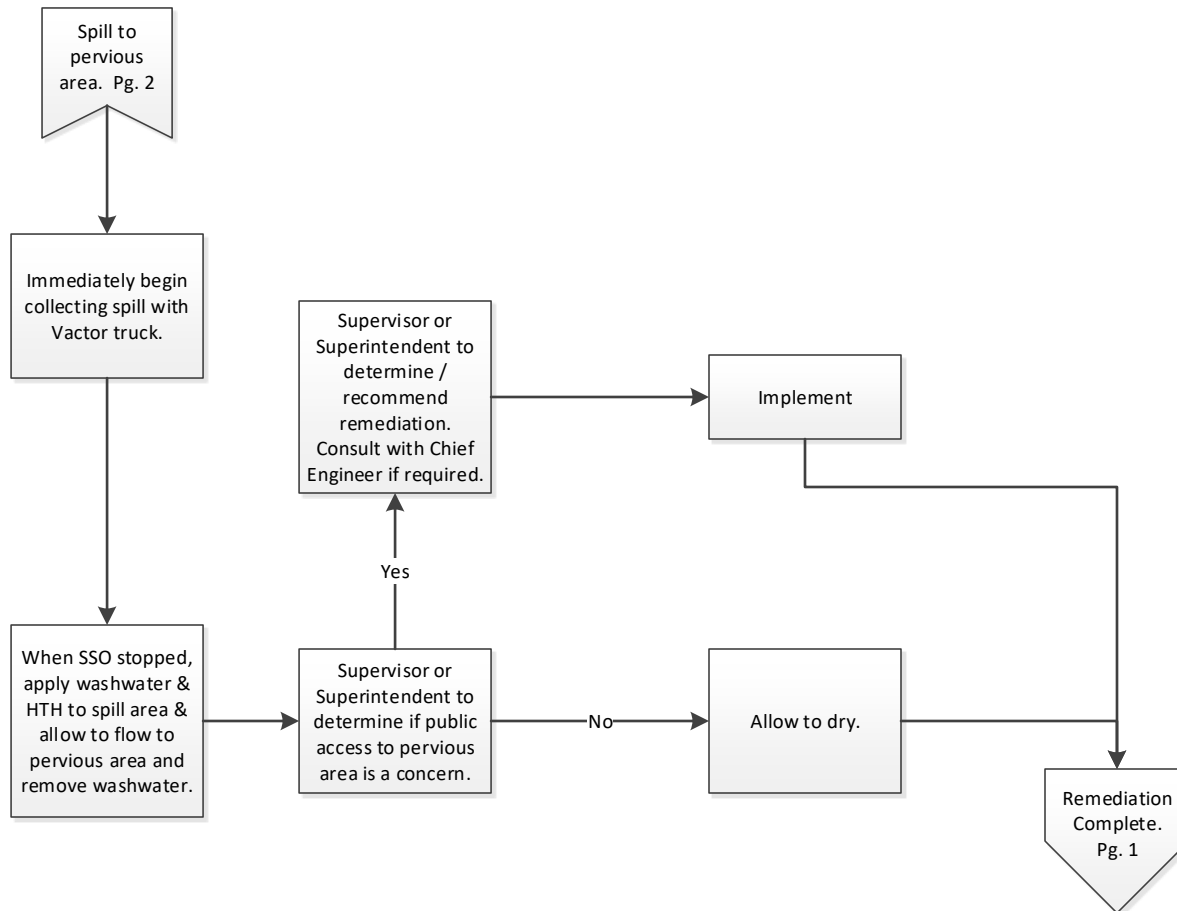


Overflow Emergency Response Plan

12-1-2019

Albuquerque Bernalillo County Water Utility Authority

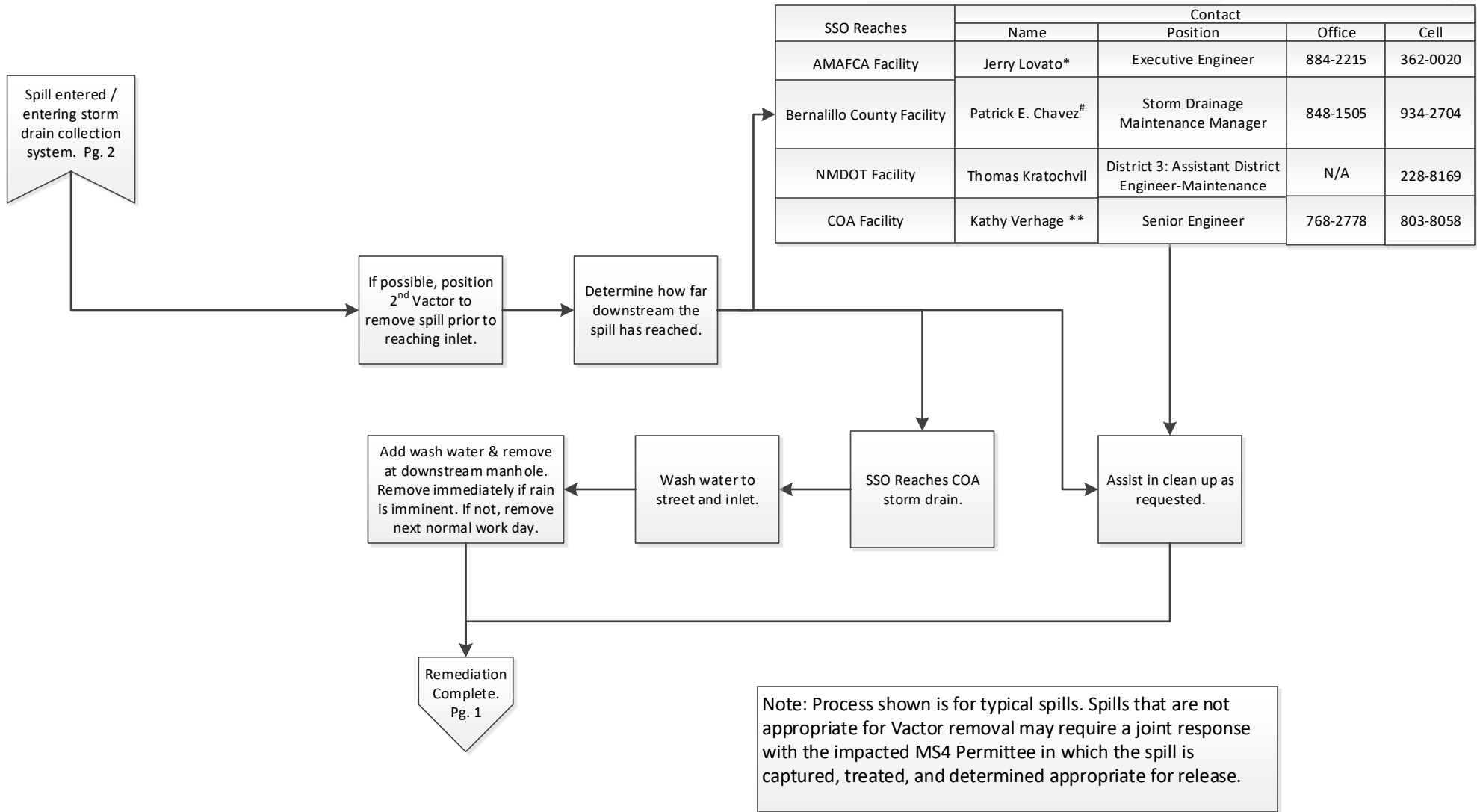




Overflow Emergency Response Plan

12-1-2019

Albuquerque Bernalillo County Water Utility Authority



*If Jerry Lovato is not immediately available, call:

Nolan Bennett: Field Engineer (505) 301-6941
Sal Hernandez: Superintendent (505) 366-8209

**If Kathy Verhage is not immediately available, call:

David Harrison: Engr. Div. Manager (505) 238-4158
Carl Rinkenberger: O&M Manager (505) 250-4334
Daniel Tapia: O&M Supt (505) 228-6874

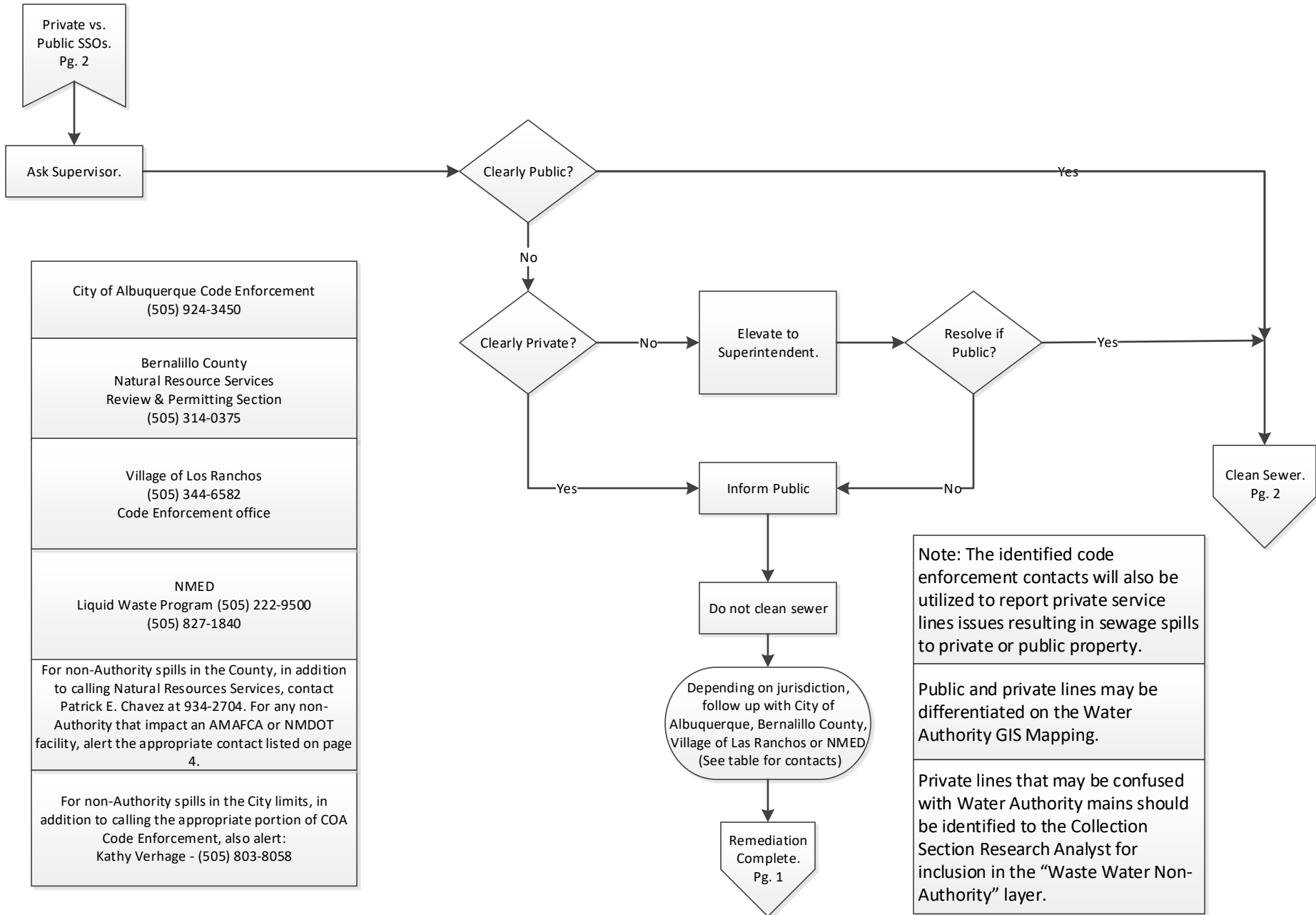
#If Patrick E. Chavez is not immediately available, call:

Kali Bronson: Stormwater Program Compliance Manager (505) 401-1779

Overflow Emergency Response Plan

12-1-2019

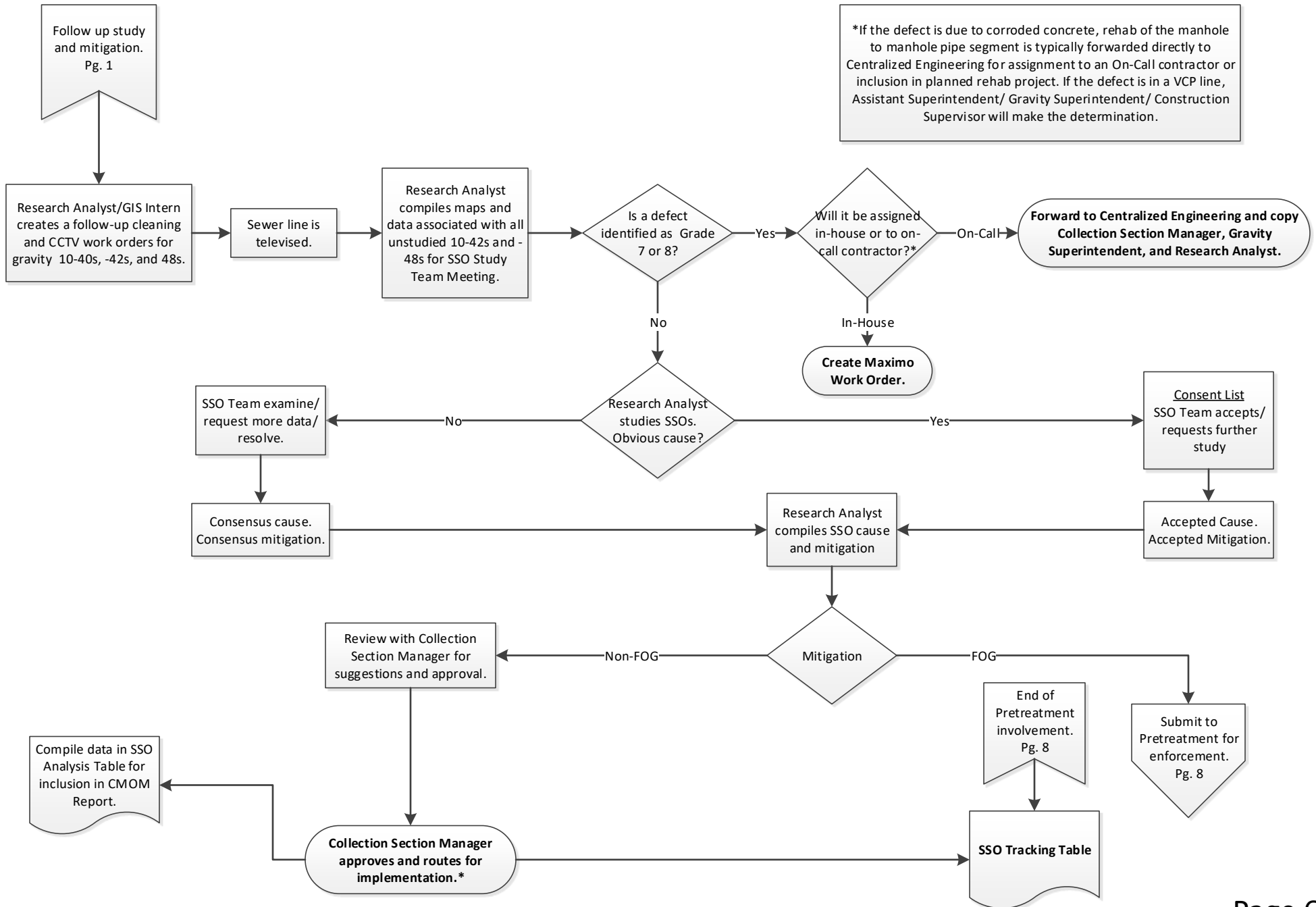
Albuquerque Bernalillo County Water Utility Authority



Overflow Emergency Response Plan

12-1-2019

Albuquerque Bernalillo County Water Utility Authority

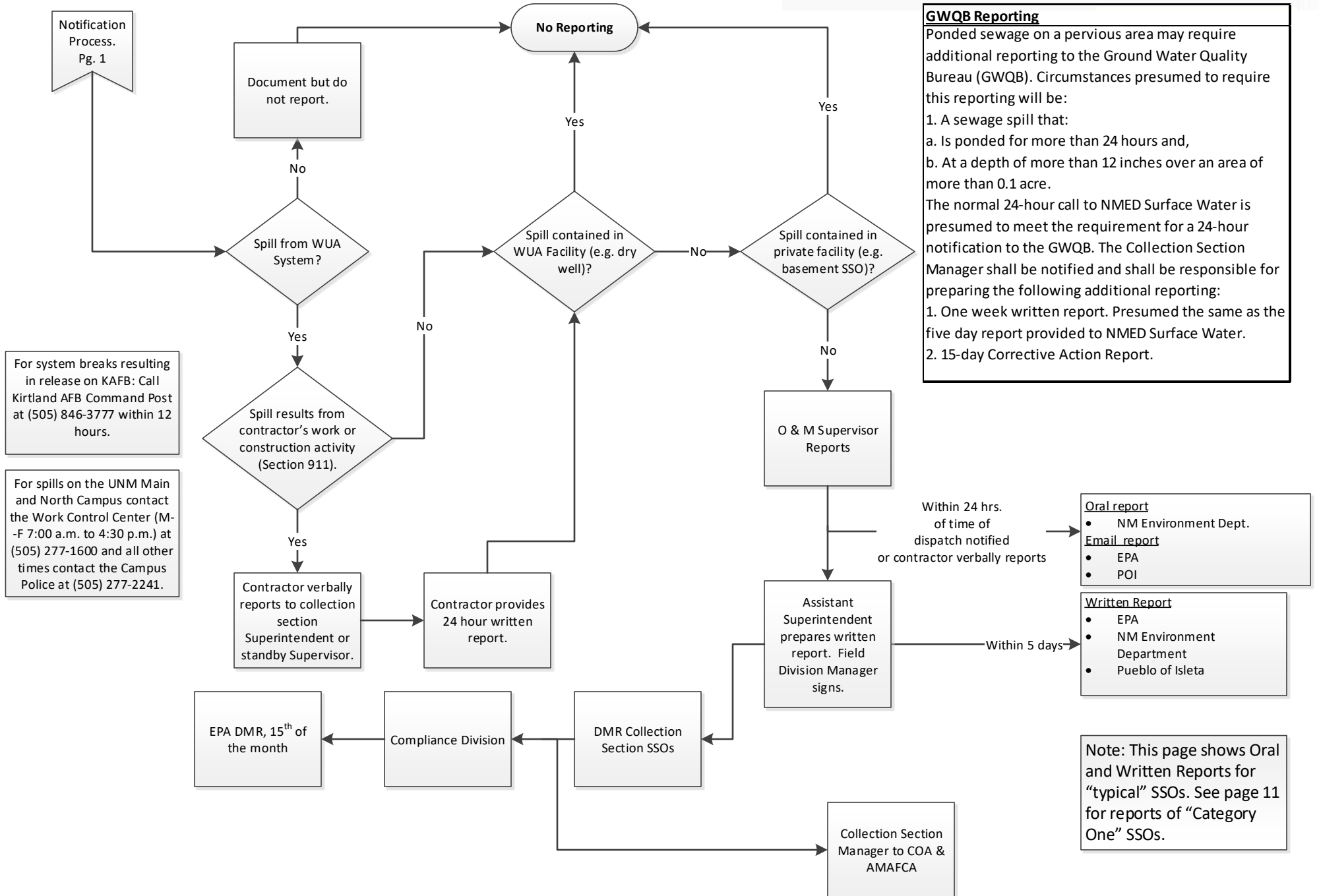


Overflow Emergency Response Plan

12-1-2019

Albuquerque Bernalillo County Water Utility Authority

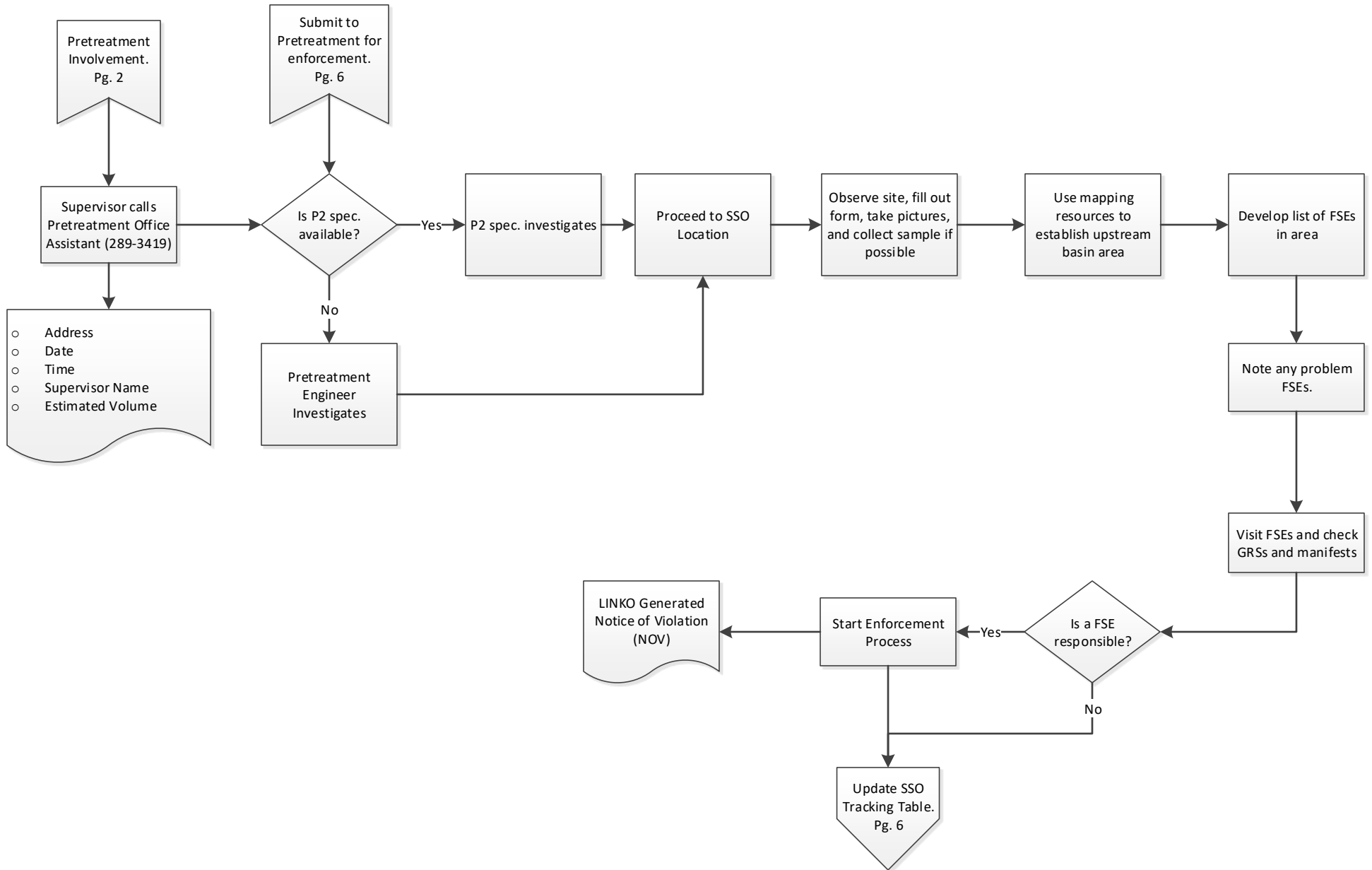
GWQB Reporting
 Pondered sewage on a pervious area may require additional reporting to the Ground Water Quality Bureau (GWQB). Circumstances presumed to require this reporting will be:
 1. A sewage spill that:
 a. Is ponded for more than 24 hours and,
 b. At a depth of more than 12 inches over an area of more than 0.1 acre.
 The normal 24-hour call to NMED Surface Water is presumed to meet the requirement for a 24-hour notification to the GWQB. The Collection Section Manager shall be notified and shall be responsible for preparing the following additional reporting:
 1. One week written report. Presumed the same as the five day report provided to NMED Surface Water.
 2. 15-day Corrective Action Report.

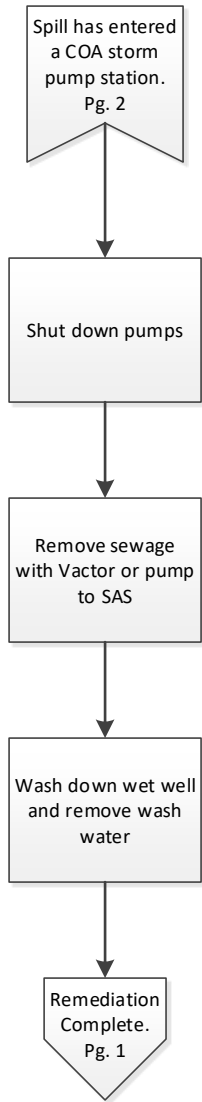


Overflow Emergency Response Plan

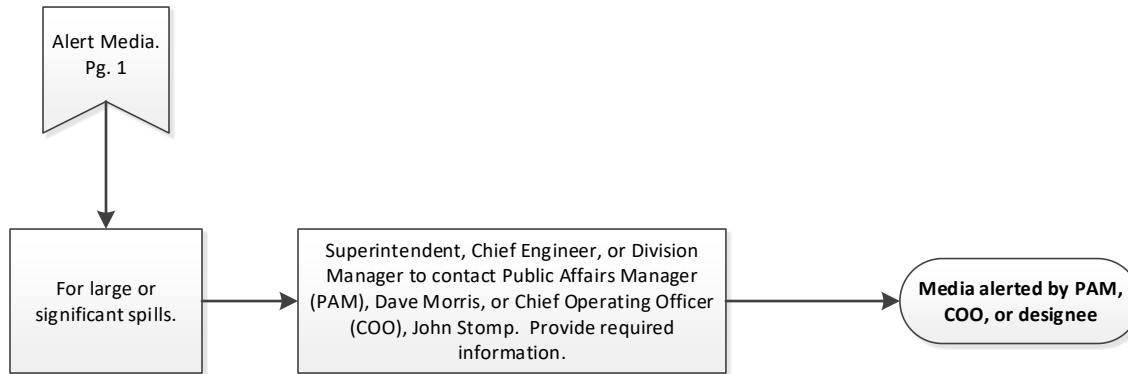
12-1-2019

Albuquerque Bernalillo County Water Utility Authority





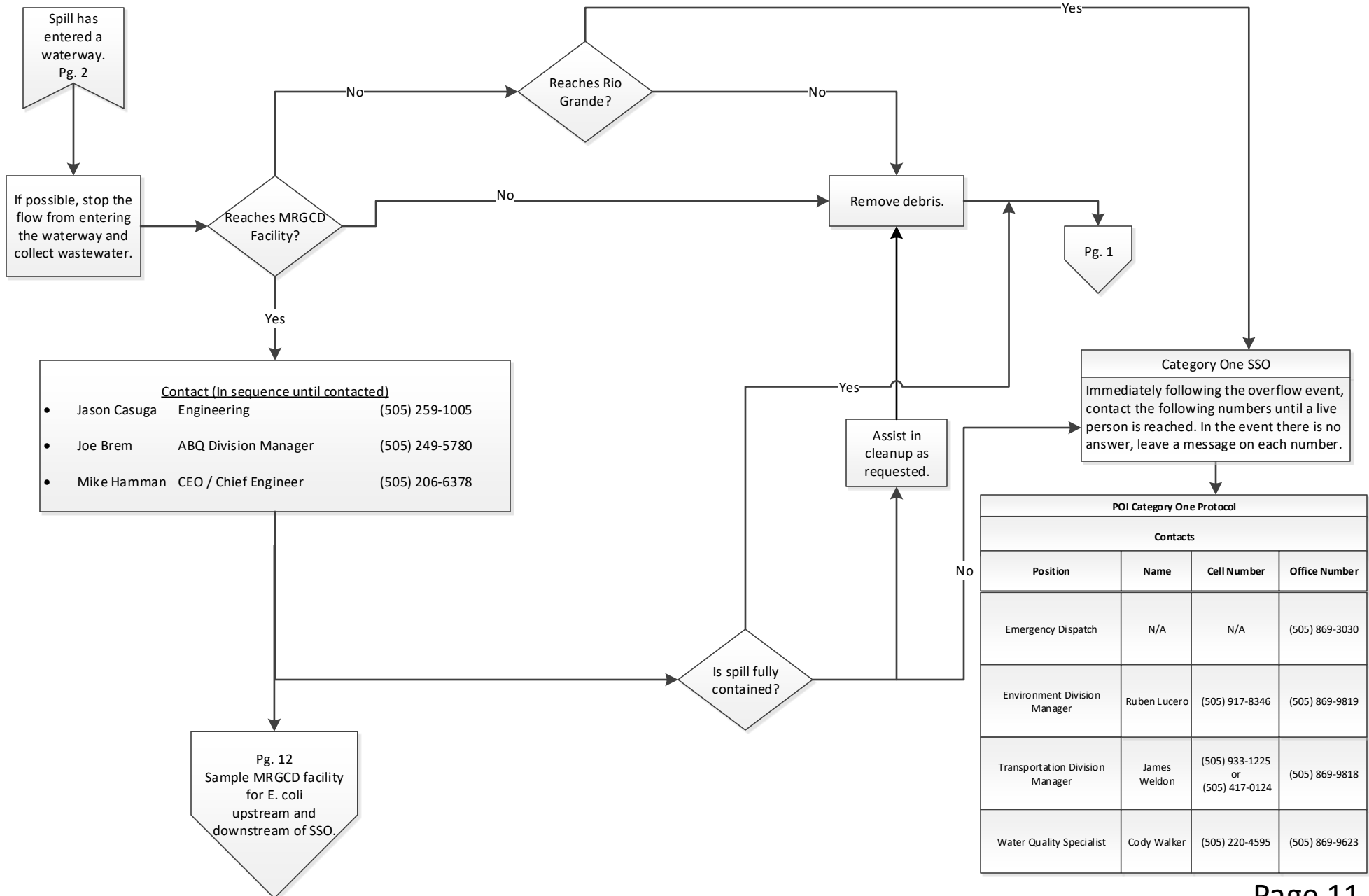
Note: Process shown is for typical spills. Some spills may require a joint response with the City of Albuquerque in which the spill is captured, treated, and determined appropriate for release.



Overflow Emergency Response Plan

12-1-2019

Albuquerque Bernalillo County Water Utility Authority



POI Category One Protocol			
Contacts			
Position	Name	Cell Number	Office Number
Emergency Dispatch	N/A	N/A	(505) 869-3030
Environment Division Manager	Ruben Lucero	(505) 917-8346	(505) 869-9819
Transportation Division Manager	James Weldon	(505) 933-1225 or (505) 417-0124	(505) 869-9818
Water Quality Specialist	Cody Walker	(505) 220-4595	(505) 869-9623

