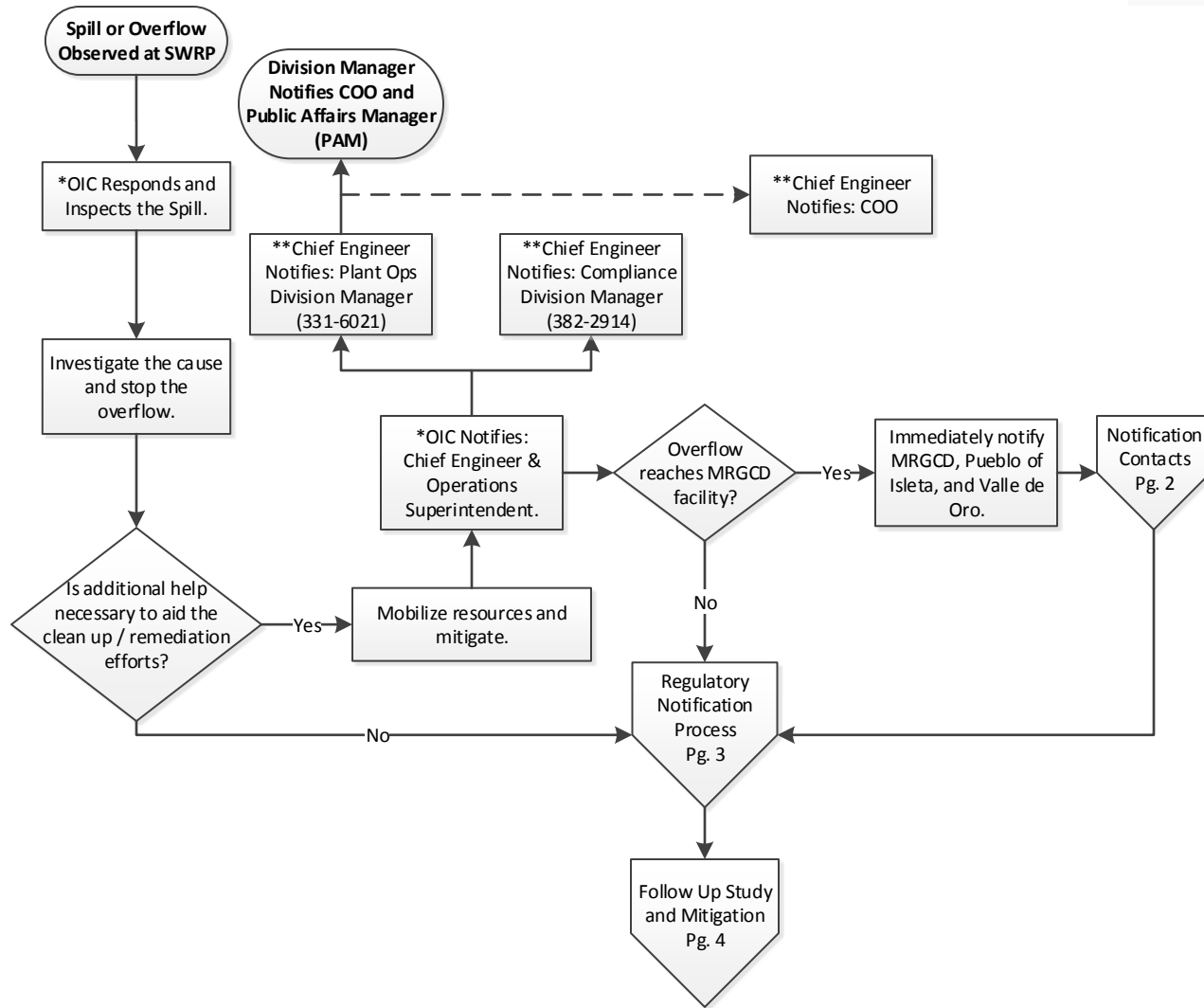


# Overflow Emergency Response Plan-SWRP

05-31-2018

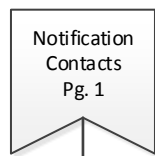
Albuquerque Bernalillo County Water Utility Authority



ABCWUA Contacts	Office	Cell
Control Room	(505)289-3411	
Supervisor On Duty	(505)289-3470	(505)263-3812
Chief Engineer	(505)289-3448	(505)506-6021
Operations Supt.	(505)289-3412	(505)382-1123
Operations Asst. Supt.	(505)289-3409	(505)228-5220
Maintenance Supt.	(505)289-3495	(505)228-0024
Maintenance Asst. Supt	(505)289-3449	(505)553-5741
Gravity Superintendent	(505)289-3458	(505)366-3378
Safety Manager	(505)289-3526	(505)239-2815
Warehouse Supervisor	(505)289-3415	
Construction Inspector	(505)289-3466	(505)239-7445
Inspector		
Principal Engineer	(505)289-3501	(505)553-5738
Principal Engineer	(505)289-3404	(505)401-4223

\* OIC = Operator In Charge

\*\*If Division Manager does not answer, Chief Engineer contacts COO and PAM.



- Chief Engineer or Designee Contacts MRGCD (In sequence until contacted)**
- Jason Casuga, Engineering Manager – (505) 259-1005 Cell
  - Mike Bland, Field Operations Supervisor – (505) 506-0244 Cell
  - Larry Acosta, Isleta Dam Tender – (505) 459-8020 Cell
  - Joe Brem, Albuquerque Division Manager – (505) 249-5780 Cell
- 

**Chief Engineer or Designee Contacts Pueblo of Isleta (POI)**

**\*Call Emergency Dispatch then all numbers until a live person is reached**

<b><u>Verbal Notification</u></b>	<b><u>Name</u></b>	<b><u>e-mail</u></b>	<b><u>Office</u></b>	<b><u>Cell</u></b>
Emergency Dispatch:			(505) 869-3030	
Envr. Div. Mngr. (Acting)	Shawna Ballay	POI17501@isletapueblo.com	(505) 869-4965	(505) 382-4745
Water Qual. Spec.	Cody Walker	POI36004@isletapueblo.com	(505) 869-9623	(505) 220-4595
Envr. Tech.	Ruben Lucero	POI36873@isletapueblo.com	(505) 869-9819	(505) 917-8346

<b><u>E-mail Notification</u></b>	<b><u>Name</u></b>	<b><u>e-mail</u></b>
Governor	J. Robert Benavides	POIGOV@isletapueblo.com
1st Lt. Governor	Max Zuni	POILT1@isletapueblo.com
2nd Lt. Governor	Andrew Teller	POILT2@isletapueblo.com
Gov.'s Exec. Assist.	Carmela Southerland	POI90009@isletapueblo.com
P.S. Exec. Director	Shawna Ballay	POI17501@isletapueblo.com
Envr. Div. Mngr. (Acting)	Shawna Ballay	POI17501@isletapueblo.com
Nat. Res. Mngr.	Mark Dixon	POI13590@isletapueblo.com
UT. Div. Mngr.	Edwin Jaramillo	POI37401@isletapueblo.com
Water Qual. Spec.	Cody Walker	POI36004@isletapueblo.com
Envr. Tech.	Ruben Lucero	POI36873@isletapueblo.com

**Chief Engineer or Designee Contacts**  
**Valle de Oro National Wildlife Refuge**

Refuge Manager: Jennifer Owen-White cell: (505) 933-2708  
 Deputy Refuge Manager: Katie McVey cell: (505) 463-7397

Post logs of calls to  
SharePoint

