

P.O Box 568
Albuquerque, NM 87103

Water Authority - Field Division

Approved Products List

Oct-20



Water Utility Authority - Field Division

Approved Product List

October 2020

TABLE OF CONTENTS

Additions, Deletions, Modifications	3
Clamps	4
Corp Stop	5
Curb Stop	6
Couplings	7
Fittings	8
Gaskets	9
Hydrants	10
Marking /locating	11
Meters /Enclosures	12
Pipe - Water	13
Saddles	14
Sample Stations	15
Setters	16
Tapping Fittings	17
Valves	18
Various	19
Sewer Saddles, Fittings & Repair	20
Sewer Manholes	21
Sewer Pipe	22

Water Utility Authority - Field Division

Approved Product List

October 2020

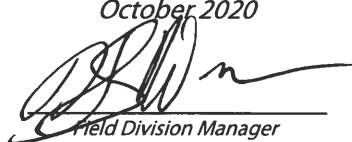
3

Additions, Deletions, & Modifications

Description	Action		Date	Category
Industrial Threaded Products Red Rubber Gasket	Add		Oct-20	Gasket - Page 9
Industrial Threaded Products Hex Bolts	Add		Oct-20	Gasket - Page 9

Approval of complete listing and Additions/ Changes

October 2020



Field Division Manager



Clamps - Full Circle

October 2020

4

Manufacturer	Type	Model / Series	Size	Specification	Standard
Ford	Stainless	FLS & FS Series	4" - 30"		ASTM A240
Mueller		500 & 510 series			ASTM A240
ROMAC	Stainless	Stainless clamp CL series			ASTM A240
JCM		Series 101 & 102			ASTM A240
Smith-Blair		Series 262 & 256			ASTM A240
Power Seal		Models 3121 -thru- 3132			ASTM A240

Corp Stop - Service
October 2020



Manufacturer	Type	Model / Series / Type	Size	Specification	Standard
Cambridge Brass		301 - M3C3 to M7C7 & M3F3 to M7F7	3/4" - 2"	802.3.6	NL C800
A.Y. McDonald		74701B Series	3/4" - 2"	802.3.6	NL C800
Ford		FB-1000	3/4" - 2"	802.3.6	NL C800
Mueller		B-2500	3/4" - 2"	802.3.6	NL C800

Curb Stop - Service

October 2020

6



Manufacturer	Type	Model / Series / Type	Size	Specification	Standard
Ford	CTS	B44\B41 Series	3/4" - 2"	802	C800
Mueller		B251 Series	3/4" - 2"	802	C800
Cambridge Brass		202 - C3F3 & H3F3 Thru C7F7 & H7F7		802	C800

Couplings - Transition

October 2020

7



Manufacturer	Type	Model / Series / Type	Size	Specification	Standard
A.Y. McDonald	Brass	74753-22 Series			C800
Ford	Brass	C84 Series			C800
Mueller	Brass	P-150 & 154 Series			C800
Cambridge Brass	Repair	Service	5/8" - 1 1/4"		C800
Power Seal	Repair	Model 3506 series			C800
Smith-Blair	Trans\Repair	Models 410's & 470's & 421 & 481			C219
Ford	Trans\Repair	FC2-W			C219
ROMAC	Trans\Repair	501/ Macro/ Alpha/ RC Coupling	4" - 12"		C219
Hymax by TPS	Trans\Repair	#2000 Series	12" & Under		C219
Mueller	Trans\Repair	Maxi-Range	12" & Under		C219

Fittings - Pipe

October 2020

8



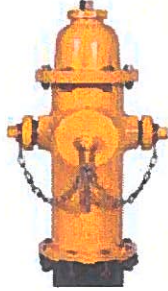
Manufacturer	Type	Model / Series	Size	Specification	Standard
Smith Cooper	Brass	Water Fittings			C800
Ford	Brass	Water Fittings			C800
A.Y. McDonald	Brass	4700-22 Series			C800
Nibco	Brass	Water Fittings			C800
Mueller	Brass	Water Fittings			C800
Cambridge Brass	Brass	Water Fittings			C800
Ebaa Mega Flange	End Flange	#2100 Series		130 / 801	C111
Star	Flanged	Flanged DI Fittings		130 / 801	C110/A21.10
Tyler	Flanged	C153 Series		130 / 801	C110/C153
Ford	Harness	#UFR Series		130 / 801	C111
Ebaa Iron	Harness	#2000 Series		130 / 801	C111
Star	Harness	#1000 Series		130 / 801	C111
Sigma	Harness	PV-Loc \ restrained		130 / 801	C111
Tyler	MJ & Bolts	MJ Wedge Restraint System		130 / 801	C110/C111/C153
Star	MJ & Bolts	MJ Wedge Restraint System		130 / 801	C110/C111/C153
Sigma	MJ & Bolts	MJ Wedge Restraint System		130 / 801	C110/C111/C153
SIP	MJ & Bolts	C110 Series Fittings		130 / 801	C110/C111/C153
Ford	Restraint	#UFR Series		130 / 801	C111
Mueller	Restraint	Aqua Grip		130 / 801	C111
Ebaa Iron	Restraint	#1100 & 1600 Series		130 / 801	C111
SIP	Restraint	EZDP - EZPVCP		130 / 801	C111
Star	Restraint	Star Grip & Series 4200		130 / 801	C111
Smith Blair	Restraint	Cam / Flange / Pipe / Bell - Lock		130 / 801	C111
Tyler Pipe	Restraint	MJ Field Lok/ TUF Grip		130 / 801	C111
Romac	Restraint	RomaGrip/ RFCA/ 470 & 600 Series		130 / 801	C111
Ford M B	Restraint & Flanged	Uni-Flange 1400 Series		130 / 801	C110/C153
Romac	Restraint & Flanged	DJ 405 Joint		130 / 801	C111
Sigma	Restraint & Flanged	One-Loc \ Sigma Flange		130 / 801	C111



Gaskets - Pipe Flange

October 2020

Manufacturer	Type	Model / Series	Size	Specification	Standard
Copper State	Flange / Bolt				C111
Tyler	Flange / Bolt				C111
Advanced Products	Flange / Isolation	G-10 Gasket Kits - Trojan		NSF - 61	ASTM D149/D395B
Sigma	Flange / Bolt				C111
Industrial Threaded Products	Red Rubber Gasket (Full Face, Ring)	American Biltrite AB-619	1/2" - 96"	ANSI / ASME B16.21	C111 / ASTM D412
Industrial Threaded Products	Flange Kits - Hex Bolts, Nut, Washer	A307 Zinc	1/2" - 96"	150# and 300#	C111 / ASTM A307 / A563



Hydrants

October 2020



10

Manufacturer	Type	Model / Series	Size	Specification	Standard
Kennedy / MH	Fire Hydrant	#K81-D / MH929		801	C502
Clow - Medallion	Fire Hydrant	F2545		801	C502
McWane companies		MH929			
American / Watros	Fire Hydrant	#WB-62 / Pacer		801	C502
American Flow Control	Fire Hydrant	Darling - Watros & Alpha ends			C502
Mueller	Fire Hydrant	#A423 & Super Centurion 250		801	C502
EJIW	Fire Hydrant	5CD250		801	C502
McGard - Locks	Fire Hydrant	Locking devices			
Kupferle eclipse	Flushing Hydrant	#9700 Fire Hydrant Flusher/ post hydrant #2			
Hydro-Guard	Flushing Hydrant	HG6 Auto Flusher			



Marking / Locating

October 2020

11

Manufacturer	Type	Model / Series	Size	Specification	Standard
3M - Scotch Mark	EMD	Spheres Only (4" Ball)		170 / 905 / 901 / 801	
3M - EMS	EMD	Tablet style - 1434 & 1435		170 / 905 / 901 / 801	
OMNI Marker	EMD	Tempo - Greenlee (4"Ball)		170 / 905 / 901 / 801	801.9.10
Empire	Detectable Tape	#31			
TerraTape	Detectable Tape	Sentry Line			
Omega	Detectable Tape	DWT			ASTM D88280A
Pro-Line	Detectable Tape	Diagonal Striped & solid 3"		5 Mil PE	ASTM D88280A
Copperhead Ind.	Trace system	High Strength	#12 AWG		
Copperhead Ind.	Trace system	SoloShot	#12 AWG		
Copperhead Ind.	Trace system	SoloShot Extreme	#12 AWG		
Copperhead Ind.	Trace system	SnakeBite Locking Connectors	#12 AWG		
Copperhead Ind.	Trace system	DryConn 3-way direct bury lug connec	#12 AWG		
Copperhead Ind.	Trace system	Snake Pit (concrete drive / roadway)			
Copperhead Ind.	Trace system	2 terminal connection lids			
Copperhead Ind.	Trace system	1.5 lb magnesium anode	#12 AWG		



Meters & Enclosures
October 2020



Manufacturer	Type	Model / Series	Size	Specification	Standard
CDR - polymer box	Box - Poly	For 3/4' thru 1" / poly		161.10 & Drw#2366	ASTM C857/C497
Armourcast	Box - Poly	For 3/4' thru 1" /poly		161.10 & Drw#2366	ASTM C857
CDR - polymer box	Box & Cover - Poly	For 1 1/2" thru 2" / poly (round Lid)		161.10 & Drw#2367	ASTM C857/C497
Armourcast	Box & Cover - Poly	For 1 1/2" thru 2" /poly (round Lid)		161.10 & Drw#2367	ASTM C857
East Jordan Iron	Box - Cover Plate/Lid	DI Cover & Lid 3220509 / 32105005	22" x 16" box	Drw# 2368 (2013)	ASTM A536
DFW	Box - Cover Plate/Lid	DFWA4CH - 24 - 101BF	For 1-1/2" and 2"	802.3.5.3	
Neenah	Box - Cover Plate/lid	DI Cover & Lid R-3309A & R-3309	17" x 30" box	Drw# 2368 (2013)	ASTM A536
Ford	Box - Cover Plug	Plug PTP (for cover Drw#2368)	EMR Hole	PTP or PTP-BR	
Sensus	Box - Cover Plug+	Pit lid housing (for cover Drw#2368)		AMR - 803 - R6	
Oldcastle	Box - Vaults	Precast Vaults\ Carson Heavy Wall	3" - 6" meter	Drw# 2370	ASTM C857
Ally - Sensus	Meters	For 3/4" on approved locations		RFB2009-108-CM	
Badger 25	Meters	For 3/4' Thru 2"		RFB2009-108-CM	
CDR \HotBox	Meters/Backflow	Enclosures for above ground protection			
USF Fabrication	Vault Hatch	Items 70776, 70731, 69192, 70791, 70696	4x4 thru 6x8	TPD THD(H20)	ASTM C1802.14



Pipe - Water

October 2020



13



Manufacturer	Type	Model / Series	Size	Specification	Standard
Pacific States	Ductile Iron	4"- 36" Tyton\ Fastite\ Thrust-Lok		129 / 130 / 801	C151\C111
U.S. Pipe	Ductile Iron	4"- 48" Tyton/TR Flex/ HP-Lok/NXT Joints		129 / 130 / 801	C151\C111
American	Ductile Iron	4"- 48" Fastite\ Flex Ring		129 / 130 / 801	C151\C111
Vinyltech	PVC C-900 DR-18	C-900 DR18 or DR14		121 / 801	C900
J.M. Eagle/ Eagle Loc	PVC C-900 DR-18	C-900 DR18 or DR14		121 / 801	C900
Diamond Plastics	PVC C-900 DR-18	C-900 DR18 or DR14		121 / 801	C900
North American	PVC C-900 DR-18	C-900 DR18 or DR14		121 / 801	C900
Vinyltech	PVC C-905 DR-25	14"-24" DR25 CL165		121 / 801	C905
J.M. Eagle	PVC C-905 DR-25	14"-24" DR25 CL165		121 / 801	C905
Diamond Plastics	PVC C-905 DR-25	14"-24" DR25 CL165		121 / 801	C905
North American	PVC C-905 DR-25	14"-24" DR25 CL165		121 / 801	C905
J.M. Eagle	PVC C-909 DR-18	ULTRA BLUE		121 / 801	C909
REHAU	PEX	Municipex	3/4 thru 2"	ASTM F2080	C800
Various Suppliers	Service - Copper	Type K-6(A) 60ft rolls 3/4" -thru- 2"		802.3.2	ASTM B88



Saddle - Service

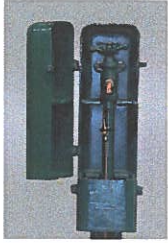
October 2020

14

Manufacturer	Type	Model / Series	Size	Specification	Standard
Cambridge Brass	2 SS straps	Series 812		802 (only brass for pvc)	C800, ASTM B62, B584, B536
Ford	2 SS straps	202BS, 202B,(for PVC) & FS202 other		802 (only brass for pvc)	C800, ASTM B62, B584, B536
Mueller	2 SS straps	BR2S, BR2B,(for PVC) & DR2S other		802 (only brass for pvc)	C800, ASTM B62, B584, B536
JCM	CCyL, steel, DI	Series 404/432 (for CCL, steel, DI)		802 (only brass for pvc)	C800, ASTM B62, B584, B536
Power Seal		Model 3417 DIS (for steel & DI)		802 (only brass for pvc)	C800, ASTM B62, B584, B536
Smith Blair		Model 317 (steel & DI) 325 (PVC)		802 (only brass for pvc)	C800, ASTM B62, B584, B536
Romac	SST	202BS, 202B, (for PVC) & S202 other		802 (only brass for pvc)	C800, ASTM B62, B584, B536
A Y McDonald		Series 3855, 3845, 3825, & 3825B		802 (only brass for pvc)	C800, ASTM B62, B584, B536

Sample Station

October 2020



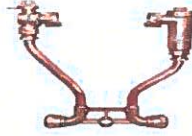
15

Manufacturer	Type	Model / Series	Size	Specification	Standard
Kupferle eclipse	Sample Station	#88 Sample Station / MG #94WM station			C502
Hydro-Guard	Sample Station	BOSS Sampling Station			C502

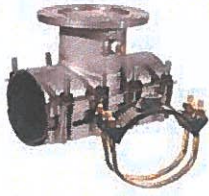
Setter - Service

October 2020

16



Manufacturer	Type	Model / Series	Size	Specification	Standard
A.Y. McDonald	Copper setter	720 Series Model 21 & WD as req.		802 & 802.3.9	NL C800
Ford	Copper setter	Series70 for 3/4" & 1" (V for 1/2" & 2") & HH72		802 & 802.3.9	NL C800
Mueller	Copper setter	B2470 for 3/4" & 1" (H-14 for 1/2" & 2")-2A		802 & 802.3.9	NL C800
Cambridge Brass	Copper setter	6020 - 207, 307, 407 DAPO & Q		802 & 802.3.9	NL C800



Tapping Sleeve

October 2020



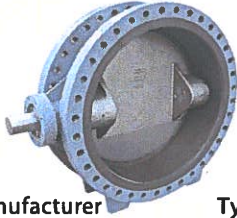
17

Manufacturer	Type	Model / Series	Size	Specification	Standard
FORD	Tapping Sleeve + MJ	Fast Series SST			
ROMAC	Tapping Sleeve + MJ	SST Series			
Smith Blair	Tapping Sleeve + MJ	Series 600 SS			
JCM	Tapping Sleeve + MJ	Series 462 & 459			
Power Seal	Tapping Sleeve + MJ	Models 3490 & 3490MJ			
Total Piping Solutions	Tapping Sleeve	Triple Tap TSS			

Valves

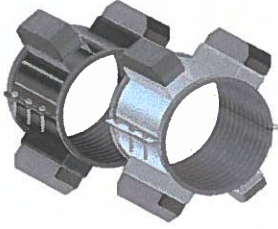
October 2020

18



Manufacturer	Type	Model / Series	Size	Specification	Standard
Apco\ DeZurik	Air Release/Cmb	50 series & 400, 410, 440 Series		Drw#2350/Sect.925	FBE Coating
ARI	Air Release /Cmb	D020, D040 & D060 series & S020, K		Drw#2350/Sect.925	FBE Coating
Vent-o-mat	Air Release /Cmb	RBX & RGX Series		Drw#2350/Sect.925	FBE Coating
Val-Matic	Air Release /Cmb	200 , 300, 800 & SF Series & 48A/49A		Drw#2350/Sect.925	FBE Coating
East Jordan Iron	Box ring & cover	6800 Series		Drws-.2326\2328	ASTM A48
Neenah	Box ring & cover	Ring & Cover #1833		Drws-.2326\2328	
Accucast	Box	12Ga culvert pipe CMP 12" Polymer 3mils		Drws-.2326\2328	ASTM A48 & A742
VBEJ	Box	12Ga culvert pipe CMP 12" Polymer 3mils		Drws-.2326\2328	ASTM A742
Contech	Box	12Ga culvert pipe CMP 12" Polymer 3mils		Drws-.2326\2328	ASTM A742
Brooks	Box non-potable	4 - TT - CL (ring & cover with sleeve)		Drw#2326NP	
East Jordan iron	Box non-potable	008430xx Series (ring & cover)		Drw#024 & 013	CL35B & ASTM A48
Val Matic	Butterfly	#2000 Series		801.3.4	C504
M&H / Clow	Butterfly	#4500 Series		801.3.4	C504
Pratt / Mueller	Butterfly	C504 valve		SJC Specification	C504
Dezurick	Butterfly	BAW		801.3.4	C504
Cla-Val	Check	500 Series			
Nibco	Check	F-918-B			MSS SP-71
Hydra- Stop	Gate/ Insert	4" - 12" with Hydra-Stop Fittings	4" - 12"	In - House	C515
EZ-2 - (Ferguson Waterwo	Gate/ Insert	12" - 16" with fittings	12" - 16"	Contractor/Ferguson	C509-01
American Flow Control	Gate / Ball	#2500 Series / Alpha Ends		801.3.3	C509
M&H/ Clow/ Kennedy	Gate RW	Style 7000 model 2638 & 2640		801.3.3	C515
Nibco	Gate RW	F-619-RW\ -SON		801.3.3	C509
Mueller	Gate	#2360 Series		801.3.3	C509
EJIW	Gate	Flow Master 6" - 12"		801.3.3.	C509
Milwaukee Valve	Small	Brass 3/8" - 4"			MSS SP-80
Apollo	Small	Brass 1/4" - 3" 102T series			MSS SP-80
FNW	Small	Ball Valve - 1/2" - 2"			MSS SP-110
Hammond	Small	Brass 3/8" - 4" IB646			MSS SP-110
Nibco	Small	T-585-70 & T-133 (1/4"- 2")			MSS SP-110\80
Cla-Val	Pressure/Relief	CRD & CRL			

Warehouse supplies - from Hydra-Stop
 Ferguson Albuquerque
 1-505-449-4900



Various Products

October 2020

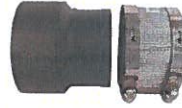
19

Manufacturer	Type	Model / Series	Size	Specification	Standard
Link-Seal	Seals	Model C			
Advance Products	Seals	Innerlynx & AM & AW			
Advance Products	Seals - Spacers	SI & SSI		Drw#2380	
BWM	Spacers - Casing	BWM SS or FB		Drw#2380	
Ford M B	Spacers - Casing	Uni-Flange Series 1300, 1390		Drw#2380	
Bilco	Valve/pit - Ladder	Lu - 4 (with ladder -up)		Drw#2335	



Fittings / Repair - Sewer

October 2020



20

Manufacturer	Type	Model / Series	Size	Specification	Standard
Geneco	Sealtite	GS4 Series	4" - 8"	905	ASTM D3034/A-48
Multi Fitting		Gasketed Sewer - SDR35/ SDR 26	4" - 16"	130 \ 901	ASTM D3034/F679
J.M. Pipe		Ring-Tite		121	ASTM D3034/F679
FP Freedom Plastics		SWB & Hug-Tite		121	ASTM D3034/F679
GPk Products		HWS Gasketed		121	ASTM D3034/F679
Tigre USA		SDR 35 & 26		121	ASTM D3034/F679
Romac		CB Saddle		121	ASTM D3034/F679
					ASTM D3034, ASTM F1336, F679, CSA
Plastic Trends	Pipe Fittings	G, L, P, H, & M Series	4" - 36"	121	B182.2
Fernco USA		Flexible & Shielded		901	ASTM D5926/C1173
Indiana Seal		Flexible Attachments		901	ASTM D5926/C1173
Source 1 Environmental		Pipe Patch (8" - 12")			ASTM F 1216
Perma Liner Ind		Perma Liner (8" to 12")			ASTM F 1216
Pro Pipe PPS		UV - Cure Spot Repair (8" - 12")			ASTM F 1216
					ASTM
ADS, Inc	Inserta Tee	Inserta Tee	2" - 30"	121	F477/F1417/F2487/F2946/C969/D3212



Manhole - Sewer
October 2020



Manufacturer	Type	Model / Series	Size	Specification	Standard
East Jordan	Ring & Cover	Standard 24" thru 48" - 1202C1	24" - 48'	161/901/905/920	ASTM A48 Class 30B
East Jordan Iron	Ring & Cover	Standard 32" NPR12-153A	32"	920	ASTM A536
Neenah/ Deeter	Ring & Cover	Std #325 24" thru 48" WUA #1263	F24" - 48'	161.10 \ 901	ASTM A48 Class 30B
Ram-Neck	Sealant	Gasket/ Sealant		161.10 \ 901	ASTM C990-09
EZ-STIK/Pro-Stick/Press-Se	Gasket	Kent Seal No.2/Pro-Stick/PSX/EZ-STIK		161.10 \ 901	ASTM A48 Class 30B
Reduced Friction Seal (RFS)	Gasket	Prelubricated Gaskets		161.1	ASTM C443 and C1619 Class C & E
Bilfinger Air Vac	Valve/pit-Vacuum	AVD-3-83D & VP5442H		Sect.925	
Long Beach Iron Works	Gas Trap Assembly	LB S-2017 (A-C)	8" - 12"	N/A	N/A



Pipe - Sewer

October 2020

22

Manufacturer	Type	Model / Series	Size	Specification	Standard
Vinyltech	PVC SDR-35	SDR-35 ASTM D3034	4" - 15"	901 / 121	ASTM D3034/F679
J.M. Eagle	PVC SDR-35	PS46 ASTM F679	4" - 15"	901 / 121	ASTM D3034/F679
J.M. Eagle	PVC SDR-35	Ultra Rib/ Ultra Corr	8" - 15"	901 / 121	ASTM D3034/F679
Diamond Plastics	PVC SDR-35	21 Series & SDR35	4" - 15"	901 / 121	ASTM D3034/F679
North American	PVC SDR-35	SDR-35	4" - 15"	901 / 121	ASTM D3034/F679
Vinyltech	PVC SDR-26	ASTM 3034/ 18" - 24" PS115	4" - 24"	901 / 121	ASTM D3034/F679
J.M. Eagle	PVC SDR-26	ASTM 3034/ 18" - 48" PS115	4" - 48"	901 / 121	ASTM F679
J.M. Eagle	PVC SDR-26	Ultra Rib/ Ultra Corr	8" - 36"	901 / 121	ASTM F949-F794
Diamond Plastics	PVC SDR-26	ASTM 3034/ 18" - 48" PS115	4" - 48"	901 / 121	ASTM F679
North American	PVC SDR-26	ASTM 3034/ 18" - 48" PS115	4" - 48"	901 / 121	ASTM F679
ADS, Inc	HDPP	SaniTite Hp 12" to 60"	12" - 60"		ASTM F2736 & D3212
Camcore /WL Plastics	HDPE	WL 103 PE4710	4" - 54"	C906	ASTM F714 & D3035
Hobas	CCFRPM	SN36 (18" - 72")	18" - 72"	C950	ASTM D3262 & 4161
Plasson USA	HDPE	Spirolite Pipe	18" - 72"	C906	ASTM F-894
Flowtite	FRP M	Flowtite FRP GRP	16" - 96"	C950	ASTM D3262