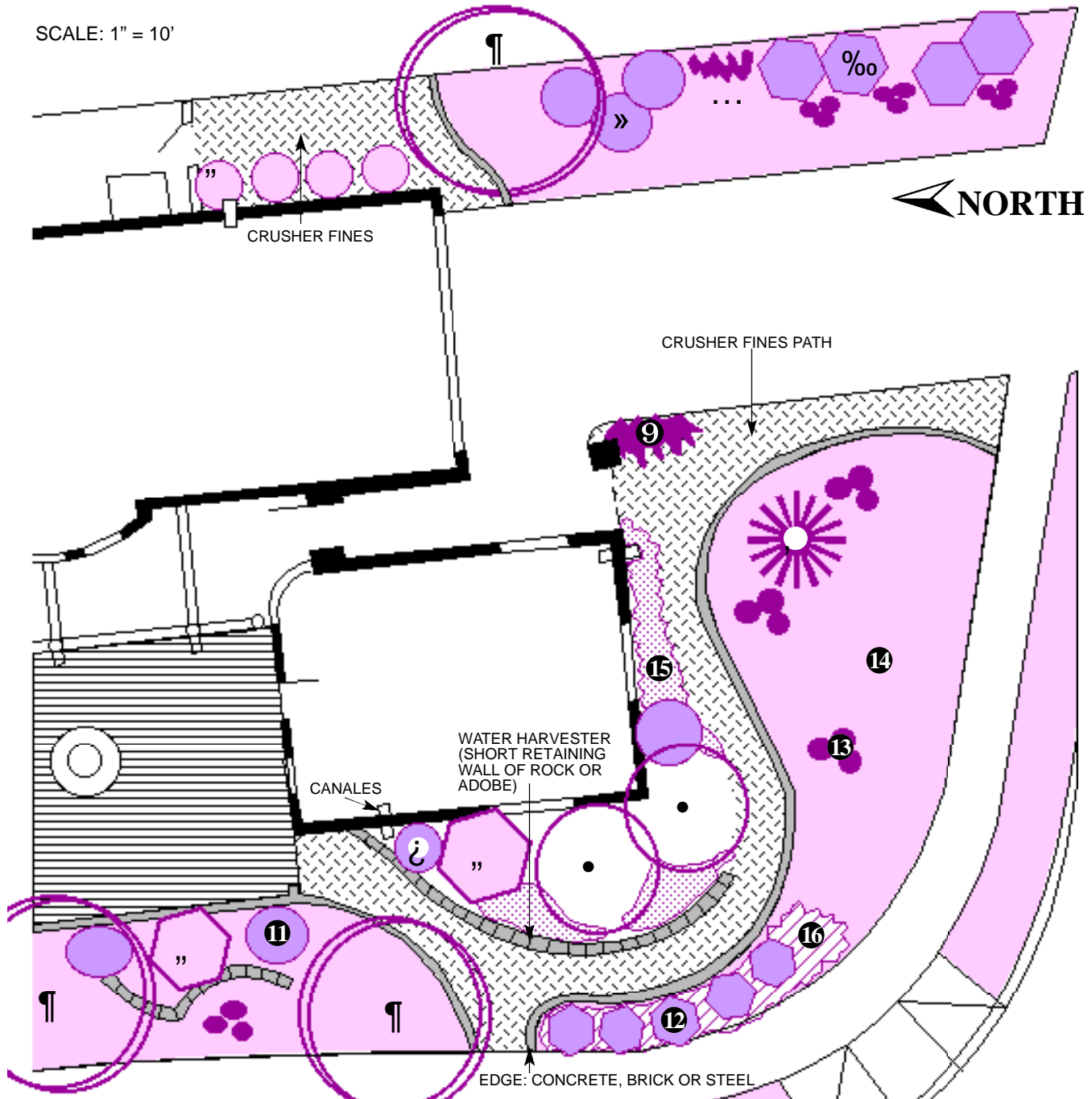


Loungescape

A Strikingly Beautiful and (almost) Maintenance-Free Yard

SCALE: 1" = 10'



Plant Legend

Trees

1. Desert Willow
2. Scrub Live Oak or Mountain Mahogany
3. Soaptree Yucca
4. Pinon Pine

Shrubs

5. Big Sage
6. Chamisa
7. Hummingbird Trumpet
8. Apache Plume

9. Desert Penstemon

10. Cherry Sage

11. Three Leaf Sumac

12. Diamanthea

Desert Accents & Succulents

13. Prickley Pear or Hedgehog

Groundcovers

14. Native Grass Mix: Blue Grama, Galleta, Indian Rice Grass, Sideoats Grama (mix w/ wildflowers)
15. Sand Sage, Broom Dalea or Fringed Sage
16. Verbena

Loungescape

Plant List

While there is no such thing as a totally maintenance-free landscape, this Loungescape comes as close to free of maintenance as possible in Albuquerque. The key to this approach is to mimic the natural environment with the look and feel of New Mexico grasslands and Piñon-Juniper forests. Instead of a traditional lawn, native grasses offer a more natural look, accented by a Soaptree Yucca and Desert Willows for color and dappled shade. Water-thrifty cacti are used for interest, color and a contrast of textures. Finely crushed gravel acts both as a mulch for the plants up against the house and a walking path to the rear of the house. For simplicity and ease of maintenance, there is no formal edge between the walking path and the foundation plantings next to the house. Rainwater is harvested from the roof and other impermeable surfaces, then directed to plants via canales, weep holes and a short retaining wall.

Short evergreen trees such as Mountain Mahogany and Piñon Pine provide year-long interest. Three-Leaf Sumac was added for fall color, Cherry Sage for summer color and Sand Sage and Fringed Sage for winter foliage. Big Sage was purposely placed along the eastern side of the house to lessen the exposure to the harsh, hot western sun, which would make the plants more water-thirsty. Lastly, spots of color are added throughout the landscape for interest.

Designed by George Radnovich, ASLA,
Sites Southwest LLC

**FOR MORE INFORMATION ON THIS AND
OTHER LANDSCAPES, CONTACT:**



City of Albuquerque
Public Works Department
Water Resources Division
Water Conservation Office
768-3655

768-2477 TTY, or Relay NM 1-800-659-8331
www address: <http://www.cabq.gov/resources/>

Common Name	Botanical Name	Approx. Height	Approx. Spread	Light Exposure	Water Use
Apache Plume	Fallugia paradoxa	5'	5'	full sun	low
Big Sage	Artemisia tridentata	4'	4'	sun/shade	low
Blue Grama	Bouteloua gracilis	4-12"	n/a	full sun	low+
Broom Dalea	Psoralethamnus scoparia	3'	3'	full sun	low
Chamisa (Rabbitbrush)	Chrysothamnus nauseosus	5'	5'	full sun	low
Cherry Sage (Autumn Sage)	Salvia greggii	2'	2'	sun/shade	medium
Damianita	Chrysactinia mexicana	2'	2'	full sun	low
Desert Penstemon	Penstemon pseudospectabilis	3'	3'	full sun	low
Desert Willow	Chilopsis linearis	20'	25'	full sun	low
Fringed Sage	Artemisia frigida	18"	18"	full sun	now
Galleta	Hilaria jamesii	14"	14"	full sun	low
Hedgehog Cactus	Echinocereus spp.	2'	3'	full sun	low
Hummingbird Trumpet	Anisacanthus thurberi	4'	4'	sun/shade	low+
Indian Ricegrass	Oryzopsis hymenoides	18"	18"	full sun	low
Mountain Mahogany	Cercocarpus montanus	10'	6'	full sun	medium
Piñon Pine	Pinus edulis	30'	20'	full sun	medium
Prickly Pear Cactus	Opuntia species	4-6'	6-8'	full sun	low
Sand Sage (Threadleaf Sage)	Artemisia filifolia	4'	4'	full sun	low
Shrub Live Oak	Quercus turbinella	18'	20'	sun/shade	medium
Sideoats Grama	Bouteloua curtipendula	30"	24"	full sun	medium
Soaptree Yucca	Yucca elata	15'	5'	full sun	low
Three-leaf Sumac	Rhus trilobata	6'	6'	full sun	low+
Verbena	Verbena peruviana	9"	18"	full sun	low