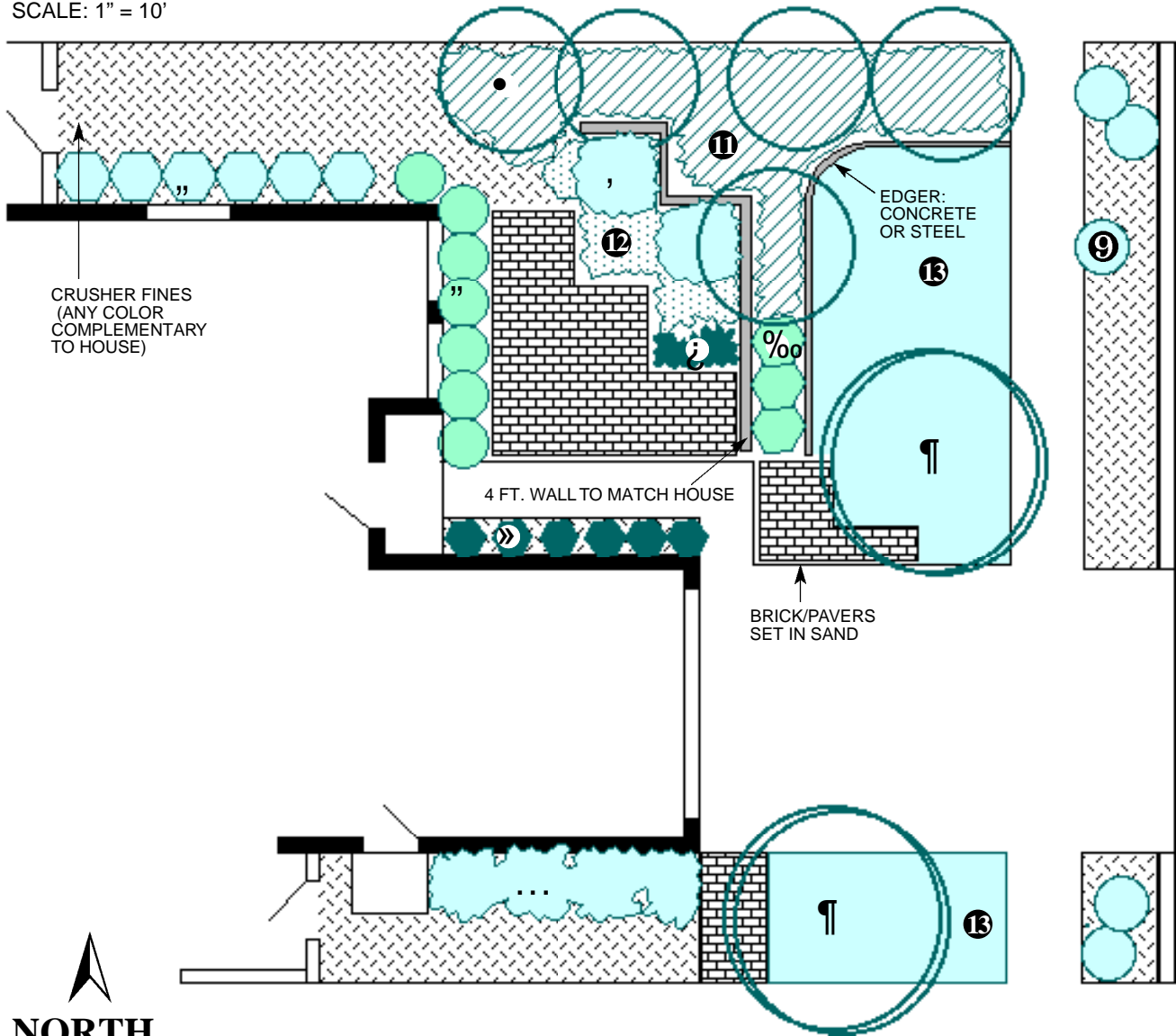


# Coolscape

A Cool and Calming Southwestern Oasis

SCALE: 1" = 10'



## Plant Legend

### Trees

1. Desert Willow
2. New Mexico Olive or Vitex

### Shrubs

3. 'Arp' Rosemary
4. Indian Hawthorne
5. Lavender
6. Compact Oregon Grape
7. Arizona Rosewood
8. Cherry Sage
9. Turpentine Bush or Beach Wormwood

### Desert Accents & Succulents

10. Purple or Yellow Iceplant

### Groundcovers

11. Woolly Thyme or Blue Fescue
12. Greek Germander
13. Buffalo Grass

This Coolscape is designed to provide an attractive streetside landscape as well as a comfortable, private area that is useable even in the winter. The privacy is achieved by the use of a low wall (which should match or complement the house) and a grove of small trees, such as New Mexico Olives or Chaste Trees. The placement of the trees effectively adds to the privacy, and provides a backdrop along the edge of the brick patio.

The patio was placed to provide some sun even on an east exposure. Beneath the trees, a groundcover of Woolly Thyme and Blue Fescue grows in the sunnier spots and Kinnickinnick in those most shady. For best use of rainwater, the brick patio should be canted to drain away from the house and into the surrounding planting beds. The edge of the patio on the north side of the yard ends in a bed of fine crushed gravel to create a path to the rear yard. Plants that do best on the cold north exposure of homes, such as compact Oregon Grape Holly and Indian Hawthorn, are used to cope with the lack of sun, which in turn makes them more drought tolerant. Likewise, Arizona Rosewood is used along the south exposure to capture as much warmth and sun as possible. Lastly, Buffalograss is planted along the front easternmost portion of the yard where it will be the most drought tolerant.

Designed by George Radnovich, ASLA,  
Sites Southwest LLC

**FOR MORE INFORMATION ON THIS AND  
OTHER LANDSCAPES, CONTACT:**



City of Albuquerque  
Public Works Department  
Water Resources Division  
Water Conservation Office  
768-3655

768-2477 TTY, or Relay NM 1-800-659-8331  
www address: <http://www.cabq.gov/resources/>

Common Name	Botanical Name	Approx. Height	Approx. Spread	Light Exposure	Water Use
Arizona Rosewood	Vauquelinia californica	12'	8'	full sun	low
Beach Wormwood	Artemisia stelleriana	12"	24"	sun/shade	medium
Blue Fescue	Festuca ovina glauca	12"	12"	sun/shade	medium
Buffalograss	Buchloe dactyloides	3-8"	n/a	full sun	medium
Cherry Sage (Autumn Sage)	Salvia greggii	2'	3'	sun/shade	medium
Compact Oregon Grape	Mahonia aquifolium 'compacta'	2'	3'	shade/sun	medium
Desert Willow	Chilopsis linearis	20'	25'	full sun	low
Greek Germander	Teucrium aroanium	9"	18"	sun/shade	medium
India Hawthorn	Raphiolepis indica	3"	4'	sun/shade	medium
Kinnickinnick	Arctostaphylos uva-ursi	9"	24"	shade/sun	medium
Lavender	Lavandula angustifolia	3'	3'	sun/shade	medium
New Mexico Olive	Forestiera neomexicana	15'	15'	sun/shade	medium
Purple Iceplant	Delosperma cooperi	6"	18"	full sun	low
Rosemary 'Arp'	Rosmarinus officianalis 'Arp'	6"	6"	sun/shade	low +
Turpentine Bush	Ericameria laricifolia	3'	4'	full sun	low
Vitex (Chaste Tree)	Vitex agnus-castus	20'	20'	full sun	medium
Woolly Thyme	Thymus pseudolanuginosus	2"	18"	sun/shade	medium
Yellow Iceplant	Delosperma nubigenum	3"	18"	full sun	low