

Wildscape

A Celebration of Wildlife
in Your Landscape

SCALE: 1" = 10'

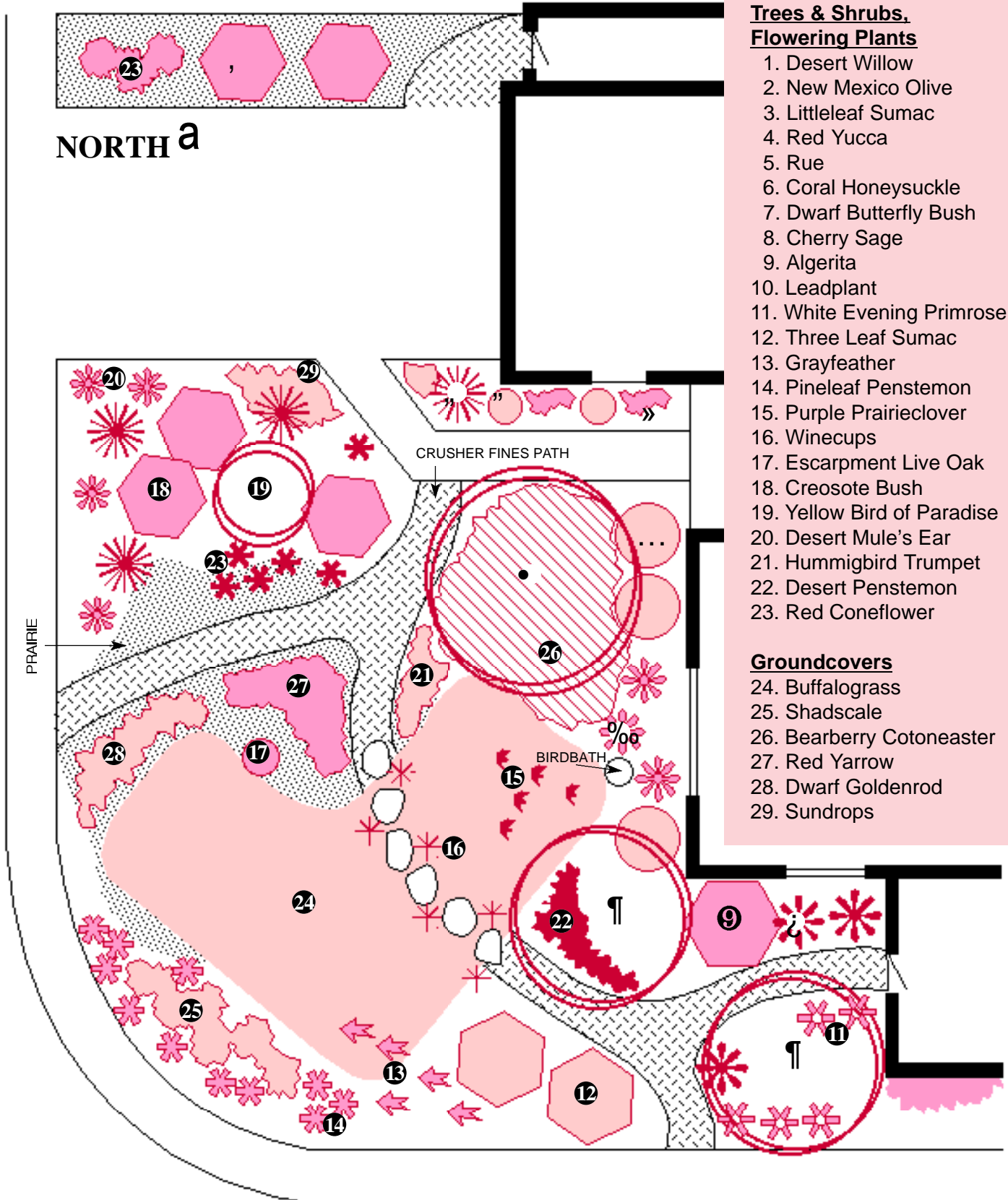
Plant Legend

Trees & Shrubs, Flowering Plants

1. Desert Willow
2. New Mexico Olive
3. Littleleaf Sumac
4. Red Yucca
5. Rue
6. Coral Honeysuckle
7. Dwarf Butterfly Bush
8. Cherry Sage
9. Algerita
10. Leadplant
11. White Evening Primrose
12. Three Leaf Sumac
13. Grayfeather
14. Pineleaf Penstemon
15. Purple Prairieclover
16. Winecups
17. Escarpment Live Oak
18. Creosote Bush
19. Yellow Bird of Paradise
20. Desert Mule's Ear
21. Hummingbird Trumpet
22. Desert Penstemon
23. Red Coneflower

Groundcovers

24. Buffalograss
25. Shadscale
26. Bearberry Cotoneaster
27. Red Yarrow
28. Dwarf Goldenrod
29. Sundrops



Plant for wildlife and you will host a never-ending garden party. Wildscapes should have tiers of canopy to provide shelter and food for a wide variety of wildlife, including birds, hummingbirds, bees and butterflies. Tall trees provide shade and shelter. Dense thickets of middle-height shrubs provide spaces for roosting and nesting and also give the landscape a sense of enclosure. Open areas with low-growing groundcovers provide areas for nesting and foraging, and the colorful flowers and berries appeal to people as well as winged visitors. A mix of evergreen plants for cover, brilliant flowers for nectar and pollen, and fruits and seeds ripening through the seasons will keep your wildlife friends fat and happy.

In this Wildscape, the Gayfeather, Dwarf Goldenrod, Leadplant, Yarrow, Rue, Grasses and Dwarf Butterfly Bush are lures for butterflies. Hummingbirds are drawn to plants with nectar-rich tubular flowers, such as Desert Willow, Penstemons, Cherry Sage, Coral Honeysuckle and Red Yucca. Local songbirds and quail will be attracted by New Mexico Olive, Sumacs, Creosote Bush, Desert Mule's Ear, Coneflowers, Shadscale, Gayfeather and Algerita.

Designed by Judith Phillips,
Bernardo Beach Native Plant Farm

FOR MORE INFORMATION ON THIS AND OTHER LANDSCAPES, CONTACT:



City of Albuquerque
Public Works Department
Water Resources Division
Water Conservation Office
768-3655

768-2477 TTY, or Relay NM 1-800-659-8331
www address: <http://www.cabq.gov/resources/>

Common Name	Botanical Name	Approx. Height	Approx. Spread	Light Exposure	Water Use
Algerita	Berberis haematocarpa	8'	10'	full sun	low+
Bearberry	Cotoneaster dammeri	12"	9'	sun/shade	medium
Blue Grama	Bouteloua gracilis	4-12"	n/a	full sun	low+
Buffalograss	Bouteloua dactyloides	3-8"	n/a	full sun	medium
Coral Honeysuckle	Lonicera sempervirens	climbing	8'	sun/shade	medium
Creosote Bush	Larrea tridentata	6'	8'	full sun	low
Desert Mule's Ear	Wyethia scabra	2'	3'	full sun	low
Desert Penstemon	Penstemon pseudospectabilis	3'	3'	full sun	low
Desert Willow	Chilopsis linearis	20'	25'	full sun	low
Dwarf Butterfly Bush	Buddleia davidii nanhoensis	5'	5'	sun/shade	medium
Dwarf Goldenrod	Solidago hybrids	3'	3'	sun/shade	medium
Escarpment Live Oak	Quercus fusiformis	25'	30'	sun/shade	medium
Gayfeather	Liatris punctata	3'	3'	full sun	low+
Hummingbird Trumpet	Anisacanthus thurberi	4'	4'	sun/shade	low+
Leadplant	Amorpha canescens	2'	3'	full sun	low
Littleleaf Sumac	Rhus microphylla	8'	9'	full sun	low+
Maximilian Sunflower	Helianthus maximiliana	10'	10'	full sun	medium
New Mexico Olive	Forestiera neomexicana	15'	15'	sun/shade	medium
Pineleaf Penstemon	Penstemon pinifolius	12"	20"	full sun	low+
Prairieclover	Petalostemon purpureum	3'	3'	full sun	low+
Red Coneflower (Mexican Hat)	Ratibida columnifera	32"	32"	full sun	low+
Red Yarrow	Achillea millefolium	18"	24"	sun/shade	medium
Red Yucca	Hesperaloe parviflora	3'	3'	sun/shade	medium
Rue	Ruta graveolens	3'	3'	full sun	medium
Shadscale	Atriplex confertifolia	2'	2'	full sun	low
Sideoats Grama	Bouteloua curtipendula	30"	24"	full sun	medium
Sundrops	Calypso hartwegii	18"	18"	full sun	low
Three Leaf Sumac	Rhus trilobata	6'	6'	full sun	low+
White Evening Primrose	Oenothera caespitosa	12"	12"	full sun	low
Winecups (Poppy Mallow)	Callirhoe involucrate	24"	24"	full sun	low+
Yellow Bird of Paradise	Caesalpinia gilliesii	10'	10'	full sun	low