

**TO:** John Stomp, Chief Operating Officer, WUA

**FROM:** Katherine Yuhas, Water Conservation Officer, WUA

**DATE:** February 24, 2010

**RE:** Water Conservation Statistics for 2009

---

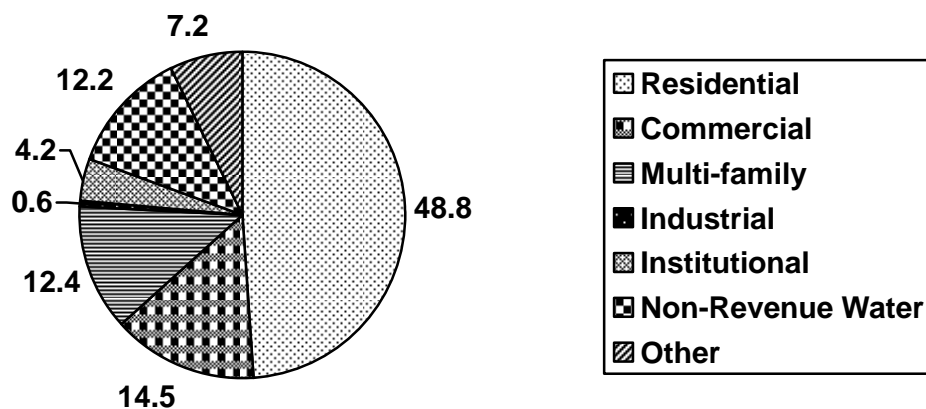
In 2009, the Utility produced 33.589 billion gallons of water for its customers and used 837 million gallons of non-potable water to irrigate large turf areas. Total water used this year, by water utility customers was 34.426 billion gallons. Additionally in 2009, ABCWUA incorporated New Mexico Utilities, Inc. into its service area. This added about 20,000 new accounts to the system.

### WATER USAGE 2010

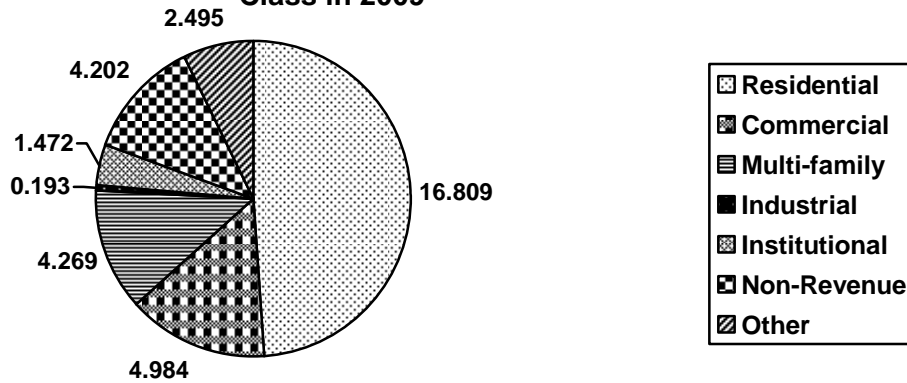
**Table 1: Usage by Customer Class**

Residential	48.8% (16.809 billion gallons)
Commercial	14.5% (4.984 billion gallons)
Multi-family	12.4% (4.269 billion gallons)
Industrial	.6% (.193 billion gallons)
Institutional	4.2% (1.472 billion gallons)
Non-Revenue Water	12.2% (4.202 billion gallons)
Other (fire hydrants, fire lines, etc.)	7.2% (2.495 billion gallons)

**Percentage of Water Use by Customer Class**



**Volume of Water in Billions of Gallons Used by Each Customer Class in 2009**



**COMPARISON OF 2009 WATER USAGE TO PREVIOUS YEARS**

In previous years, the per account method was utilized to compare use by account type before the conservation began to water use by account type in the current year. This has become not as useful a comparison, because in the 15 years since the water conservation program began, new customer classes have been added and accounts have been moved between classes.

The new method to evaluate water use reduction by class will be to compare the relative number of gallons being used daily by each customer class to previous years. In future years, data from all the previous years will be retained, so that a longer historical comparison can be made.

**Table 2: Water Usage Comparison**

	<b>2009</b>	<b>2008</b>
Residential	77.8	76.1
Commercial	23.1	23.5
Multi-family	19.7	22.3
Industrial	.95	1.0
Institutional	6.6	15.4
Non-Revenue Water	19.4	21.3
Other	11.4	1.6
<b>Total</b>	<b>158.9</b>	<b>161.2</b>

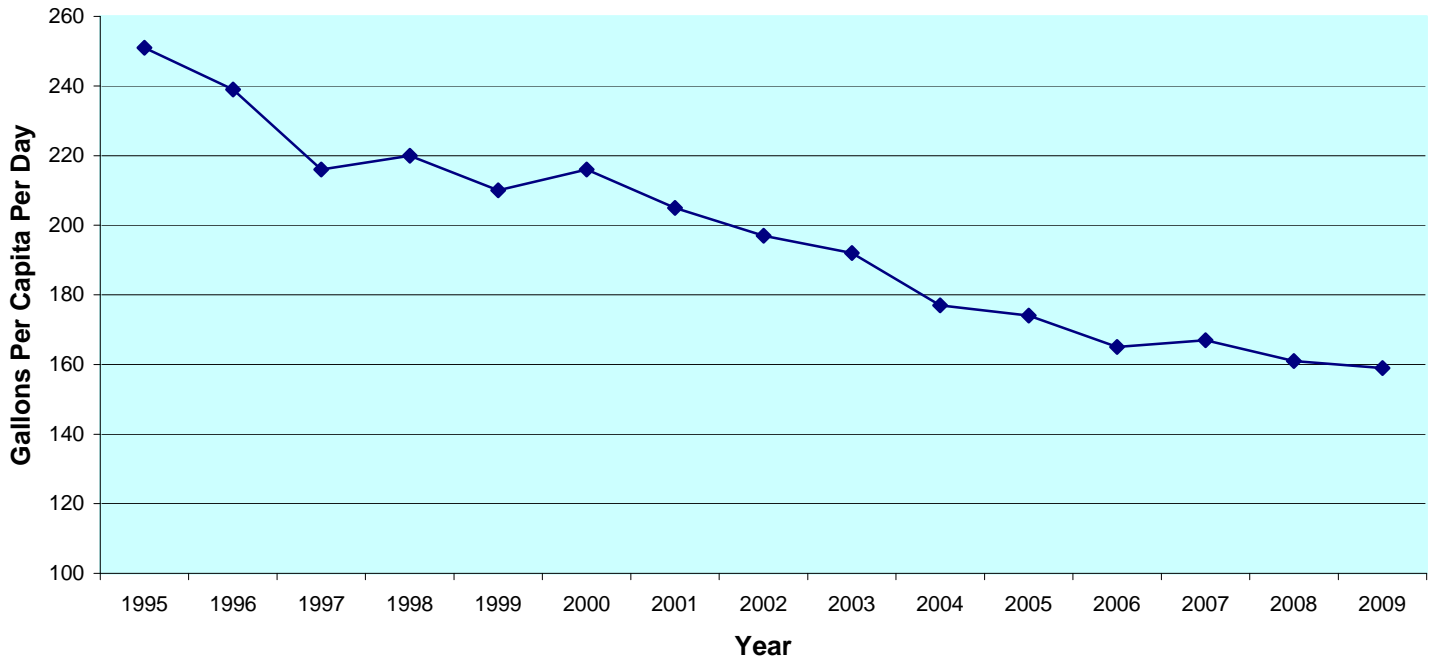
In 2009, many accounts were removed from the institutional customer class and transferred to the class designated as other. This accounts for the large drop in the usage of the institutional customer class and the corresponding increase in usage of the other class. The addition of New Mexico Utilities, Inc. to the ABCWUA service area changed the characteristics of the population we serve. This is why the residential class appears to have used slightly more water in 2009 than in 2008.

Utilizing the gallons per capita per day (GPCD) method to measure water usage reduction, we achieved the following water conservation savings. The gallons per capita per day method, divides the total water produced by the total population served.

**Table 3: Annual GPCD Figures**

	<b>GPCD without reuse water</b>	<b>GPCD with reuse water</b>	<b>Population Served</b>	<b>Water Use in Billions of Gallons</b>
1995	251	N/A	445,167	40.775
1996	239	N/A	450,856	39.301
1997	216	N/A	457,156	36.118
1998	220	N/A	463,507	37.181
1999	210	N/A	470,036	35.970
2000	216	N/A	476,285	37.470
2001	205	N/A	482,577	36.141
2002	197	N/A	489,248	35.164
2003	192	N/A	499,684	35.064
2004	176	177	512,288	32.974
2005	171	174	522,937	32.799
2006	162	165	537,757	31.751
2007	164	167	550,917	32.904
2008	158	161	560,766	32.347
2009	155	159	591,650	34.427

**ABCWUA Gallons Per Capita Per Day Water Usage 1995-2009**



Note: To calculate the gallons per capital per day usage, the GPCD calculator from the Office of the State Engineer was used for 2008 forward. Population increases dramatically in 2009 because New Mexico Utilities, Inc. was added to our service area.

The table below shows how many billions of gallons of water have been saved by the water conservation program each year. It is assumed that without the conservation program, the population would have continued to use water at 250 gallons per capita per day.

**Table 4: Water Conservation Savings (billions of gallons)**

1996	1.84
1997	5.597
1998	5.114
1999	6.921
2000	5.991
2001	7.894
2002	9.480
2003	10.532
2004	13.609
2005	15.158
2006	17.238
2007	17.104
2008	19.118
2009	19.561
<b>Total</b>	<b>155.157</b>

Since the beginning of the conservation program over 155 billion gallons of water have been saved. This is enough water to serve the entire population of our service area for 4.5 years.

Attachment: OSE Calculator Tables